

NORTH 1/4 CORNER
SECTION 35
FOUND CAST IRON
MONUMENT
(TIES VERIFIED)

S0°13'35"E
40.00'

20TH AVENUE

S89°51'09"E
80.00'

S89°51'09"E
329.98'

S89°51'09"E 1216.36'

S89°51'09"E 878.44'

N0°17'53"W 2636.62'

N0°06'52"E 471.61'

S0°03'00"W 471.61'

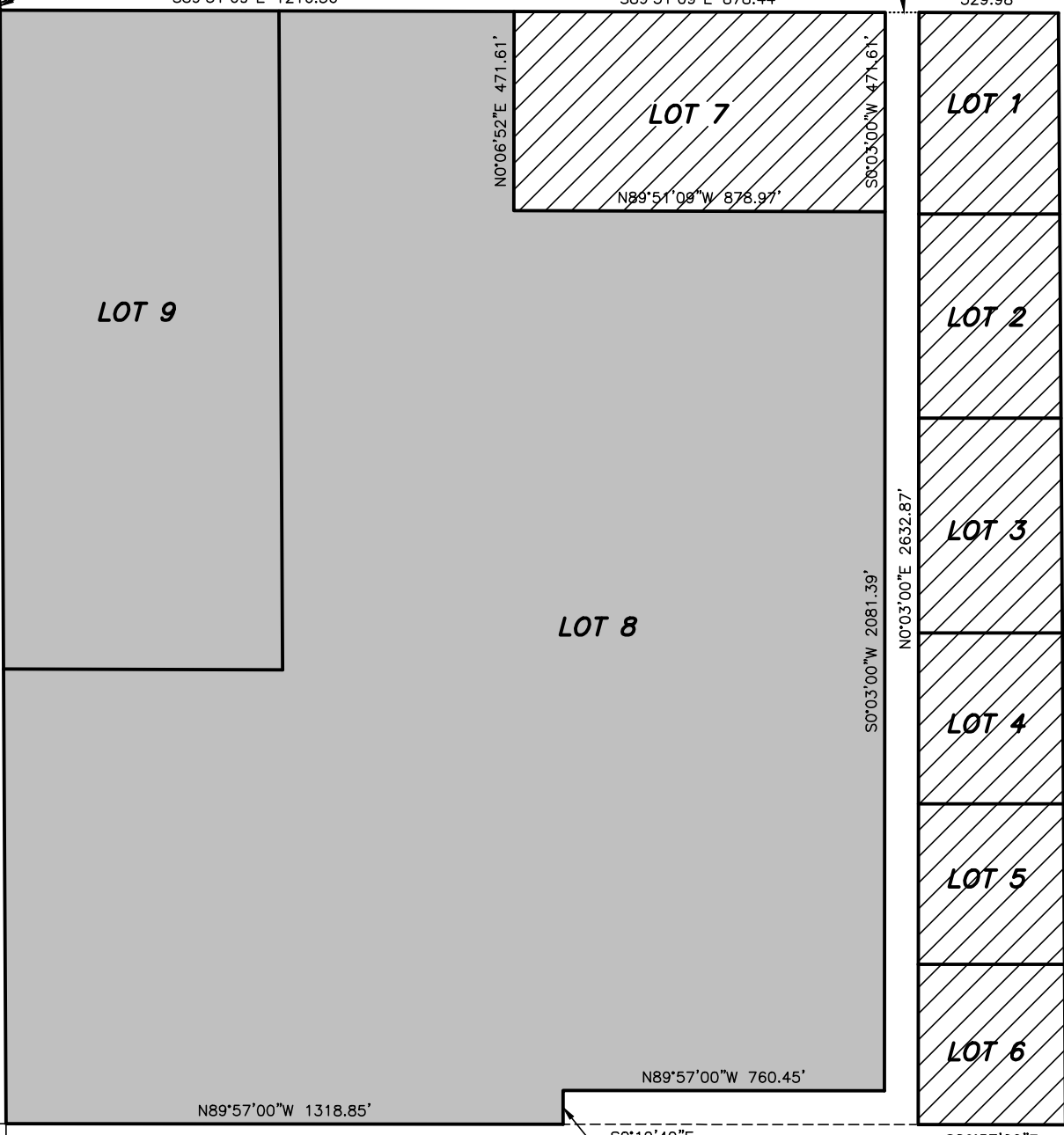
N89°51'09"W 878.97'

S0°03'00"W 2081.39'

N0°03'00"E 2632.87'

S0°21'45"E 2632.37'

COUNTY ROAD 1





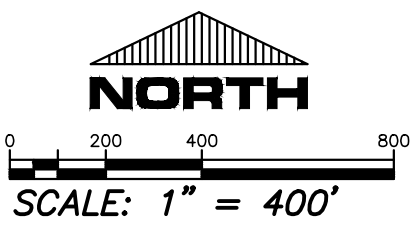
REZONE DESCRIPTION FOR LANDS TO BE ZONED I-1

COMMENCING AT THE NORTH 1/4 CORNER OF SECTION 35; THENCE S.00°13'55"E., A DISTANCE OF 40.00 FEET TO THE POINT OF BEGINNING FOR THE AREA TO BE REZONED I-1; THENCE S.89°51'09"E., A DISTANCE OF 1216.36 FEET; THENCE S.00°06'52"W., A DISTANCE OF 471.61 FEET; THENCE S.89°51'09"E., A DISTANCE OF 878.97 FEET; THENCE S.00°03'00"W., A DISTANCE OF 2081.39 FEET; THENCE N.89°57'00"W., A DISTANCE OF 760.45 FEET; THENCE S.00°19'49"E., A DISTANCE OF 80.00 FEET; THENCE N.89°57'00"W., A DISTANCE OF 1318.85 FEET; THENCE N.00°17'53"W., A DISTANCE OF 2636.62 FEET TO THE POINT OF BEGINNING;

REZONE DESCRIPTION FOR LANDS TO BE ZONED C-3

COMMENCING AT THE NORTH 1/4 CORNER OF SECTION 35; THENCE S.00°13'55"E., A DISTANCE OF 40.00 FEET; THENCE S.89°51'09"E., A DISTANCE OF 1216.36 FEET TO THE POINT OF BEGINNING FOR THE AREA TO BE REZONED C-3; THENCE CONTINUING S.89°51'09"E., A DISTANCE OF 878.44 FEET TO THE START OF A LINE; THENCE CONTINUING S.89°51'09"E., A DISTANCE OF 80.00 FEET TO THE END OF A LINE; THENCE CONTINUING S.89°51'09"E., A DISTANCE OF 329.98 FEET; THENCE S.00°21'45"E., A DISTANCE OF 2632.37 FEET; THENCE N.89°57'00"W., A DISTANCE OF 348.92 FEET; THENCE N.00°03'00"E., A DISTANCE OF 2632.87 FEET TO THE START OF A LINE; THENCE N.89°51'09"E., A DISTANCE OF 80.00 FEET TO THE END OF A LINE; THENCE S.00°03'00"W., A DISTANCE OF 471.61 FEET; THENCE N.89°51'09"W., A DISTANCE OF 878.97 FEET; THENCE N.00°06'52"E., A DISTANCE OF 471.61 FEET TO THE POINT OF BEGINNING.

- LEGEND**
-  C-3 COMMUNITY COMMERCIAL DISTRICT
 -  I-1 LIGHT INDUSTRIAL DISTRICT



REZONE EXHIBIT

IN THE NORTHEAST 1/4 - NORTHEAST 1/4, NORTHWEST 1/4 -
NORTHEAST 1/4, SOUTHWEST 1/4 - NORTHEAST 1/4, AND
SOUTHEAST 1/4 - SOUTHEAST 1/4
OF SECTION 35, TOWNSHIP 28 NORTH, RANGE 10 WEST,
CITY OF EAU CLAIRE, CHIPPEWA COUNTY, WISCONSIN